

# TEAM MEMBER HANDBOOK 2026



June 8 - 12 // 6pm - 9pm

- Please take a few minutes to read!*
- May 31st – All Team Member Meeting 4pm*
- Be in place BY 5:30pm each night!*

**#SURGEcamp - [WestRidge.com/SURGE](http://WestRidge.com/SURGE)**

# Table of Contents

|   |               |
|---|---------------|
| <b>#1 WEST RIDGE CHURCH MISSION &amp; BELIEFS</b>   | <b>pg. 1</b>  |
| <b>#2 WEST RIDGE CHURCH VALUES</b>                  | <b>pg. 2</b>  |
| <b>#3 WEST RIDGE KIDS HOLINESS STATEMENT</b>        | <b>pg. 3</b>  |
| <b>#4 WHY SURGE CAMP?</b>                           | <b>pg. 3</b>  |
| <b>#5 BEFORE CAMP</b>                               | <b>pg. 3</b>  |
| <b>#6 CAMP WEEK</b>                                 | <b>pg. 4</b>  |
| <b>General Info for ALL Team Members</b>            | <b>4</b>      |
| <b>Team Member Absence</b>                          | <b>5</b>      |
| <b>SURGE Jr. for SURGE Team Members' Kids</b>       | <b>5</b>      |
| <b>Early Drop-off for SURGE Team Members' Kids</b>  | <b>5</b>      |
| <b>Late Pick-Up for SURGE Camp Participant</b>      | <b>6</b>      |
| <b>Traffic Flow and Parking</b>                     | <b>6</b>      |
| <b>Moving Kids from Place to Place</b>              | <b>7</b>      |
| <b>Some Good Rules to Follow</b>                    | <b>7</b>      |
| <b>Bathroom Policies</b>                            | <b>7</b>      |
| <b>Bathroom Breaks</b>                              | <b>7</b>      |
| <b>Safety FIRST for our Team Members and Guests</b> | <b>8</b>      |
| <b>What if an accident occurs on my watch?</b>      | <b>8</b>      |
| <b>Rain &amp; Inclement Weather Plans</b>           | <b>10</b>     |
| <b>Emergency Procedures</b>                         | <b>11</b>     |
| <b>#7 SPECIFIC TEAM MEMBER ROLES</b>                | <b>pg. 18</b> |
| <b>#8 SURGE SCHEDULES</b>                           | <b>pg. 19</b> |
| <b>#9 SURGE MAPS</b>                                | <b>pg. 20</b> |

# #1 WEST RIDGE CHURCH MISSION & BELIEFS

## **Our Mission**

Leading people to become fully devoted followers of Jesus Christ. (*Matthew 11:28-30*)

## **Our Strategy for Encouraging Life-Change**

LOVE GROW SERVE SHARE

## **Our Beliefs**

### **About God**

We believe in one God who eternally exists in three distinct persons: the Father, the Son, and the Holy Spirit. These three are co-equal and are one God. God the Father is the Creator and Ruler of the Universe. We believe that He is limitless in power, knowledge, wisdom, love, and holiness. We also believe that He has revealed himself as the Father of the redeemed.

*Genesis 1:26-27; 3:22; Psalms 90:2; Matthew 28:19; 1 Peter 1:2; 2 Corinthians 13:14*

### **About Jesus Christ**

We believe that Jesus Christ is the Son of God. He is the second person of Trinity and is co-equal with the Father. Jesus was born of a virgin, lived a sinless human life and offered himself as the perfect sacrifice for the sins of all men by dying on a cross. He rose from the dead after three days to demonstrate His power over sin and death. He ascended to Heaven's glory where he sits at the right hand of the Father. He will return to earth to reign as King of Kings, and Lord of Lords.

*Matthew 1:22,23; Isaiah 9:6; John 1:1-5, 14:10-30; Hebrews 4:14-15; 1 Corinthians 15:3-4; Romans 1:3-4; Acts 1:9-11; 1 Timothy 6:14-15; Titus 2:13*

### **About the Holy Spirit**

He is present in the world to make men aware of their need for Jesus Christ. He also lives in every Christian from the moment of salvation. The Holy Spirit is co-equal with the Father and the Son of God. He provides the Christian with power for living, understanding of spiritual truth, and guidance in doing what is right. He gives every believer a spiritual gift when they are saved. As Christians we seek to live under His control daily.

*2 Corinthians 3:17; John 16:7-13, 14:16-17; Acts 1:8; 1 Corinthians 2:12, 3:16; Ephesians 1:13, 5:18; Galatians 5:25*

### **About the Bible**

The Bible is God's Word to all people. It was written by human authors, under the supernatural guidance of the Holy Spirit. It is the supreme source of truth for Christian beliefs and living. Because it is inspired by God, it is the truth without any mixture of error.

*2 Timothy 1:13, 3:16; 2 Peter 1:20-21; Psalms 119:105, 160; Proverbs 30:5*

### **About Human Beings**

We believe that man was created in the image of God to have fellowship with Him but became alienated from that relationship through sinful disobedience. As a result, man is totally incapable of coming back into a right relationship with God by his own effort.

*Genesis 1:27; Psalms 8:3-6; Isaiah 53:6a, 59:1-2; Romans 3:23*

### **About Salvation**

We believe that salvation is a gift of God to man. Man can never make up for sin by self-improvement or good works. Only by trusting in Jesus Christ as God's offer of forgiveness can man be saved from sin's penalty. Eternal life begins the moment one receives Jesus Christ into his life by faith.

*Romans 5:1, 6:23; Ephesians 2:8-9; John 1:12, 3:16, 10:29, 14:6; Titus 3:5; Galatians 3:26; 2 Timothy 1:12; Hebrews 7:25, 10:10, 14*

### **About Eternal Security**

We believe that God gives us eternal life through Jesus Christ; therefore, the true believer is secure in that salvation for eternity. If you have been genuinely saved, you cannot "lose" it. Salvation is maintained by the grace and power of God, not by the self-effort of the Christian. It is the grace and keeping power of God that gives us this security.

*John 10:29, 2 Timothy 1:12, Hebrews 7:25, 10:10 & 14.*

### **About the Church**

We believe the church is the Body of Christ, the family of God made up of every Christian on earth. It is expressed through local congregations of Christians. It is a place where the Holy Spirit empowers Christians to use their gifts in reaching non-Christians with God's salvation message, and in helping each other grow spiritually. The church is led by the Holy Spirit through the pastors and elders He has established.

*Acts 2; 1 Corinthians 12; Ephesians 2:19, 4:11-13 10.*

### **About Eternity**

We believe that people were created to live forever. We will either exist eternally separated from God by sin, or eternally with God through forgiveness and salvation. To be eternally separated from God is to live in Hell. To be eternally in union with Him is eternal life. Heaven and Hell are real places of eternal existence.

*John 2:25, 3:16; Romans 6:23; Revelation 20:15*

## **#2 WEST RIDGE CHURCH VALUES**

- **We embrace biblical authority.** Scripture is inspired by God and it's our full and final authority on all matters of faith and practice.  
(Psalm 119:11, Hebrews 4:12, 2 Timothy 3:16-17)
- **We embrace prayer.** We are a church that prays, believing that prayer is the power source behind everything that happens in our ministry.  
(Ephesians 6:18, 2 Chronicles 7:14-15, Matthew 6:5-13)
- **We embrace grace.** Our salvation is received by the grace of God and not by our self-effort, and that shapes our acceptance and interaction with others.  
(Ephesians 2:8-9, Romans 5:8)
- **We embrace authenticity.** Because none of us are perfect, we acknowledge both our strengths and our weaknesses as we pursue holiness and unity as a church. Truth-telling and biblical conflict resolution are essential to relational authenticity.  
(Romans 3:23, Ephesians 4:25-32, John 17:23, Matthew 18:15-20)

- **We embrace excellence.** Through forethought and intentionality, we pursue excellence in our desire to honor God and inspire people.  
(1 Corinthians 10:31, Colossians 3:17, Malachi 1:6-14, Proverbs 27:17)
- **We embrace people.** People matter to God, so they matter to us. Our words and actions will demonstrate our love for God by loving others, including those outside the faith.  
(Luke 5:30-32, Luke 15, Matthew 18:14)
- **We embrace a Kingdom-mindset.** We partner with other churches and organizations and creatively embrace new methods to reach more people for Christ.  
(John 17:23, 1 Corinthians 9:19-23, Romans 10:14-15, Mark 4:10-12)
- **We embrace generosity.** We serve a generous God and want to reflect Him in being generous with our time, spiritual gifts and finances.

### #3 WEST RIDGE KIDS' HOLINESS STATEMENT

- God calls His children to take up our cross daily and follow Him in humility and holiness.
- 1 Corinthians 6:9-11 explains this call as follows: “Do not be deceived: neither the sexually immoral, nor idolaters, nor adulterers, nor men who practice homosexuality, nor thieves, nor the greedy, nor drunkards, nor revilers (*someone who speaks abusively or disparagingly about others*), nor swindlers (*someone who deceives or cheats others*) will inherit the kingdom of God. And such were some of you. But you were washed, you were sanctified, you were justified in the name of the Lord Jesus Christ and by the Spirit of our God.”
- The Bible teaches that sexual immorality is any sexual expression out of the context of a marriage relationship. The biblical description of marriage is one man and one woman in a lifelong commitment.
- We ask all West Ridge Kids Team Members to trust in Jesus and turn away from any sinful behaviors or lifestyles.

### #4 WHY SURGE CAMP?


SURGE is designed to give God glory and to share the Gospel! Offering a sports, arts, and STEM camp for kids that has gifted instructors and coaches appeals to families in our community whether they know Jesus or not. Because of this, SURGE provides a way for us to continue to disciple our West Ridge Kids regular attenders as well as to reach kids who may not attend church or hear about Christ at home. Often, we see kids that decide to follow Jesus influence their parents to do the same!

### #5 BEFORE CAMP

Be sure that you have signed up to serve at camp at [www.westridge.com/SURGE](http://www.westridge.com/SURGE). After that, look for an email invite to join our team on the Konverse app and follow the instructions to do so. We will use Konverse to keep you up to date on all things camp related and to keep you in contact with the SURGE team. If you have any issues or questions about Konverse, please email us at [SURGE@westridge.com](mailto:SURGE@westridge.com) .

Please stay connected with God by spending time in His word and prayer.

Please pray for all our SURGE team members, the West Ridge Kids staff, and the families that will be involved in camp. Also, please pray for good weather, for protection over everyone that will be on our campuses, and for God to prepare your heart to serve well!

 **Konverse** If you are not yet in the Konverse app, be on the lookout for an email invite to join and follow the instructions in the email to do so. If you are already in the Konverse app from a previous year, get logged back in. You **HAVE** to be in the Konverse app!!! We will use it to communicate camp info with team members, to store important camp documents like the handbook, maps, schedules, etc., to share photos and videos, and much more! If you have questions about Konverse, please email Craig at [craigsells@gmail.com](mailto:craigsells@gmail.com).

Go ahead and mark your calendar for Sunday, May 31st. That is when we'll be holding our super-duper-you-gotta-be-there, very important SURGE TEAM MEMBER MEETING. This meeting will take place at 4:00 p.m. that Sunday in the Worship Center at West Ridge Church (WRC). Childcare is available for birth through 5<sup>th</sup> grade with registration at <https://westridge.ccbchurch.com/goto/forms/1400/responses/new> .

At the TEAM MEMBER MEETING, we'll be going over NEW information and changes for this year's camp, sharing last-minute updates, and breaking out into teams to get to know each other and learn more specifics about your area. Oh yeah, and this is when you'll receive your coveted SURGE shirt.

If you absolutely cannot make our TEAM MEMBER MEETING, please let your direct report know through Konverse. In that case, we will plan another time to go over the meeting information with you, and you may pick up your SURGE t-shirt the following Sunday, June 7<sup>th</sup>, in the Discovery Room at WRC from 10 a.m. until 2 p.m. or Monday, June 8<sup>th</sup> in Team Member Central (by the fish tank at WRC) from 4:30 to 5:30 p.m.

*(Disclaimer: We won't be able to give you a SURGE shirt or allow you to serve with kids UNTIL you've completed the WRC background check process. If you know you haven't done it, go to [www.westridge.com/backgroundcheck](http://www.westridge.com/backgroundcheck) to get started. If you are unsure, email [taras@westridge.com](mailto:taras@westridge.com) with questions. If you know you're cleared to serve through West Ridge Church, AWESOME!)*

## #6 CAMP WEEK

### General Information for All Team Members

**Bring a Christ-like attitude, a commitment to teamwork, and a desire to serve the kids and parents** God puts in your path!

**Bring a water bottle each night of camp.**

**Aim to arrive by 5 on Monday evening, and then by 5:15 p.m. the rest of the week!** We need you in your area, ready to serve 30 minutes prior to the start of camp. **(EXCEPTION: Early Drop-Off & SURGE Jr. volunteers need to arrive by 4:45 all week)**

**Be where you are supposed to be throughout the entire evening!** This is crucial in case parents ever need to pick kids up in an emergency or if we need to find you or your group for any reason.

**Wear your SURGE shirt and nametag each night at camp.** Yeah, we know that you'll have to wash your shirt once or twice, but they make our team easy to identify for kids and parents who may need assistance. As for your nametag, it reassures the Security Team and parents that you are screened and allowed to work with the kids. ***If you lose/ forget your nametag, you or your small group coach will need to go/ radio to Team Member Central (downstairs at WRC near the fish tank) or EPMS Camp Central (Outdoor Tent) to get a replacement.***

**Please wear shorts that fully cover your backside (and preferably even your upper thigh!!) no matter how you move 😊.**

**Put your cell phones away during camp hours** except in case of emergency or if needed for a camp activity.

**Join us for an awesome Friday Night Family Finale.** We will not have SURGE tracks or small groups on Friday. Instead, we will invite family and friends to join their campers for a large group from 6-7 p.m. in the WRC Worship Center. Then we will give them an activity to go out into the community to do together. *(Most of you won't have any team member responsibilities that night, BUT if you are available, we would love for you and your crew to join us for the finale).*

***\*We have included SURGE Maps and Schedules at the end of this handbook for your reference\****

## **Team Member Absence**

If you get sick or have an emergency come up last minute that would keep you from being able to fulfill your SURGE commitment, PLEASE let your direct report know ASAP through Konverse.

## **SURGE Jr. for SURGE Team Members' Kids that are Birth to Upcoming Kindergarteners**

SURGE Jr. is a fun camp-like experience for team members' kids that are birth through upcoming kindergartners. While you serve at SURGE, your little ones will learn more about who God is and what He has done for us through games, videos, music, art, and more! SURGE Jr. takes place at West Ridge Church in the West Ridge Kids Pre-K area from 5 p.m. until the last child is picked up each night. *(Please get your child[ren] ASAP once finished with your team member role).* The SURGE Jr. registration link is at the end of the Team Member sign up, but if you missed it somehow



use this QR code to sign your little one up. SURGE Jr. registration closes on May 17<sup>th</sup>, so don't wait! If you have questions, email Dee Harris at [deeh@westridge.com](mailto:deeh@westridge.com)

## **Early Drop-off for SURGE Team Members' Kids that are Camp Participants**

Early Drop-off for TEAM MEMBERS' KIDS ONLY will be held in the Kids' Theater upstairs at WRC starting at 5 p.m. each evening. You will need to go with your kids to drop them off and you will need to sign them in at a kiosk and get them a name tag in order to enter the Early Drop-off area.

Those in charge of Early Drop-off will take your kids to their track locations at 5:45 p.m. We will have a bus to take any 1<sup>st</sup>-3<sup>rd</sup> graders that are participating in tracks at EPMS.

Remember, this is for camp age kids only (rising 1<sup>st</sup> graders to rising 6<sup>th</sup> graders). If your kids are birth to upcoming kindergartners, please see the above section titled “Surge Jr. for SURGE Team Members’ Kids...”

Also, please note that if your camp age kid goes to the same place you do for the start of camp, you do not need to take them to Early Drop-off. Instead, go ahead and take them with you to your assigned area. (For example: If I am a small group leader for 4<sup>th</sup>-6<sup>th</sup> grade Mad Science and my son is a 5<sup>th</sup> grader participating in Football, we both start camp in the Worship Center, so he does not need to go to Early Drop-off. He can just hang with me in the Worship Center until his Football small group leader arrives. For another example: If I am a Soccer assistant and my daughter is a first grader participating in soccer, we both start the night in the Soccer area at EPMS, so I can just take her there with me.

### **Late Pick-Up for SURGE Camp Participants**

Inevitably, some parents will be LATE to pick up their kids. Also, parents who are volunteering at SURGE cannot pick up their kids until they are finished with their role for the night, so to keep from being spread out all over the SURGE campuses after hours and to reconnect volunteers with their own kids, 4<sup>th</sup>-6<sup>th</sup> Small Group Leaders (SGLs) and ALL their kids who have not yet been picked up will leave their track location at 9:15 to head to the WRC Worship Center. There will be a bus to bring kids and leaders from EPMS back to the WRC Worship Center at this time. (All 1<sup>st</sup>-3<sup>rd</sup> graders finish camp in the Worship Center, so they will just stay there...easy peasy 😊). **The SGLs will hang out with these kids in the Worship Center at their track sign until they are all picked up. Please keep your kids with you and under control. For safety purposes, the security team will man the Worship Center doors and only allow parents with a pick-up tag to enter. Inside the Worship Center, the SGLs still need to check parent pick-up tags against the kid’s name tag in order to release a kid to their parent.**

### **Traffic Flow and Parking**

Both the Hwy 92 and Dallas Hwy Wal-Mart entrances and exits to WRC will be open. The main entrance and exit for EPMS will be open, as well as the entrance / exit that connects to the East Paulding High School parking lot.

There will be a parking team to assist with traffic flow and any questions that you may have at both the WRC and the EPMS campuses. Please use caution and pay attention to the parking team’s directions.

EPMS Track Key Leaders, Assistants and Small Group Coaches are allowed to park at EPMS. Everyone else including EPMS Small Group Leaders need to park at West Ridge Church in the Team Member Lot (see map).

There will be golf carts to take people from the parking lots to WRC and vice versa, as well as minibuses to take leaders over to EPMS. (The minibuses will pick up in the circle drive in front of the church every five minutes starting at 5 p.m. nightly)

## Moving Kids from Place to Place

We will have different schedules for different age groups and campuses (1<sup>st</sup>-3<sup>rd</sup> and 4<sup>th</sup>-6<sup>th</sup> / WRC and EPMS), and buses will transport kids and leaders who have tracks at EPMS to and from WRC. **To keep us all on track, we have included the schedules at the end of this handbook, and you will also have them printed on the back of your SURGE nametag.** Your small group coach will also help to keep you on schedule and will remind you of times and location changes. If you have any questions or concerns at camp, don't hesitate to ask your small group coach.

## Some Good Rules to Follow

1. Small groups are like a little SURGE family and should stay together at all times.
2. No one should leave SURGE during camp hours for any reason. If there is an emergency, please let your small group coach know.
3. If you have a positive attitude, the kids are much more likely to be positive. Keep a smile in your heart and on your face.
4. Leave all areas you are in better than you found them. Be responsible and respectful; wipe your feet; throw away all trash; etc. And require the campers to do the same 😊.

## Bathroom Policies

Below, you will see your group's scheduled bathroom break times. Please take your kids at that scheduled time and encourage them all to go. Besides the group bathroom break, only send kids 1 or 2 at a time when it is an emergency. Have your small group coach or a large group coach go with your kids to the restroom, if it is out of eyesight. All restrooms inside WRC will be available for use, and we will have restrooms open inside EPMS. Also, there will be a Port-O-Pot at EPMS and one near BMX and Kid vs. Wild at WRC (see maps). **If possible, we do NOT want kids to leave large group during Pastor Brent's message!**

### 1<sup>st</sup> -3<sup>rd</sup> Grade Bathroom Breaks

#### West Ridge Kids Bathrooms Upstairs

6:30 Cheerleading, 6:40 Jiu Jitsu, 6:40 Table Sports

#### Gallery Bathrooms Upstairs

6:30 Woodworking, 6:40 Tumble & Gymnastics  
7:05-7:15 Photography Fun, RC Cars, Skateboarding

#### Special Needs Bathrooms Upstairs

Anytime from 6:00-7:15 Nerf Battle, E-Sports

#### Atrium Bathrooms Downstairs

6:30-7:00 Kitchen Chaos, Snack Attack (one small group at a time)  
7:05-7:15 BMX, Kid vs. Wild, Backyard Games, Ninja Warrior, Dodgeball, Beautiful Bakery  
8:10-8:20 Art, Creative Crafting, Grill Masters, Crochet Creations, Lego Masters, Mad Science

#### EPMS Locker Rooms

7:00-7:10 Soccer, Rocket Blast, Martial Arts

#### EPMS Front of Gym

7:00-7:10 Basketball

#### EPMS Hallways

7:00-7:10 Baseball, Field Day Fun, Football, Pickleball

## **4<sup>th</sup>-6<sup>th</sup> Grade Bathroom Breaks**

### **West Ridge Kids Bathrooms Upstairs**

6:50-7:00 Beautiful Bakery,

7:50-8:00 Cheerleading, Jiu Jitsu, Table Sports

### **Gallery Bathrooms Upstairs**

6:50-7:00 Tumble & Gymnastics, Woodworking, BMX, Kid Vs. Wild

### **Special Needs Bathrooms Upstairs**

Anytime from 7:15-8:30 Nerf Battle, E-Sports

### **Atrium Bathrooms Downstairs**

6:50-7:00 Backyard Games, Beautiful Bakery, Dodgeball, Ninja Warrior, Photography Fun, RC Cars, Skateboarding

7:50-8:00 Art, Creative Crafting, Grill Masters, Crochet Creations, Lego Masters, Mad Science

8:10-8:40 Kitchen Chaos, Snack Attack (one small group at a time)

### **EPMS Locker Rooms**

7:00-7:10 Soccer, Rocket Blast, Martial Arts

### **EPMS Front of Gym**

7:00-7:10 Basketball

### **EPMS Hallways**

7:00-7:10 Field Day Fun, Volleyball, Baseball, Pickleball, Football

## **Safety FIRST for our Team Members and Guests**

As mentioned earlier, everyone volunteering at camp must have on a nametag at all times for security purposes. The nametag and shirt indicate that a person has been screened by West Ridge to work with kids. Please let your small group coach or a security team member know IMMEDIATELY if you notice anyone interacting with kids without a nametag and a SURGE shirt. Again, **if you misplace your nametag, you or your small group coach must contact/ go to Team Member Central at WRC or Camp Central at EPMS ASAP for a replacement.**

**Parents CANNOT watch large group, small group, nor any indoor or outdoor tracks due to space restraints and security reasons. We kindly but firmly ask all parents/ guardians who are not on our SURGE team to leave campus or to stay in their car after drop-off and until pick-up at 9 p.m. nightly. *\*Exception: If a parent/ guardian needs to pick up a kid at WRC during camp hours, they should show their pickup tag at the North Entrance Doors (the Main WRC Entrance near the circle drive). Then a SURGE team member should walk them to Camp Central where a registration team member will radio to their kid's small group coach. The small group coach or another SURGE team member will bring the kid to their parent at Camp Central. Then a SURGE team member will escort the parent and the kid out of the building. If a parent/ guardian needs to pick up a kid at EPMS during camp hours, they should show their pickup tag at the EPMS Camp Central Tent and wait there with our SURGE team members until their kid arrives at the tent.***

In all situations, we follow the “two-adult rule.” This rule says that we should ALWAYS have another adult within eyesight when we are with kids, and if we need to pull a kid away from the group to talk, we make sure to have another adult present. **We are not alone with kids at any time.** This is for the kids’ protection and our leaders’ protection.

Do NOT allow kids to be on technological devices during camp – **not their own devices nor your devices.** You should only use your device if it is to show or teach the kids something as a whole group from the lesson plan.

Also, **do NOT exchange any contact information with a camper.** If you want to be in touch with a kid for any reason, go through their parent!

**Do NOT administer medication to a kid.** If there is an emergency, let your small group coach know ASAP, and they will get help from the Medic Team and / or West Ridge Staff. **(At the parent’s request, SGLs should keep a kid’s inhaler or epi-pen in their SGL bag, but please remind the parents that the kid will need to administer the inhaler or epi-pen on their own, and that the SURGE team is not responsible for lost or stolen inhalers or epi-pens).**

### **What if an accident occurs on my watch?**

1. Report the injury immediately to a lead or a coach so that they can call the Medic Team and /or a West Ridge staff member to assess the injury.
2. The team member who witnessed the incident and a lead or a coach need to work together to fill out an online Incident Report completely, accurately, and ASAP.
3. Scan the following QR Code to get to the report. (This QR Code is also found in the Resources Room in the Konverse app).



4. A Medic Team member and a West Ridge staff member will determine if the parents need to be called, and they should both be present to help communicate what happened with the parents. (Do not talk to a parent alone about any sensitive information whether it be an injury, discipline, physical or mental concern, etc. **We ask that you inform a West Ridge staff member and have him/her present for these kinds of conversations!**)

*\*\*Also note, if a medic calls a parent/guardian to come check on or pick up their child at WRC during camp hours, that parent should show their parent pick up tag at the North Entrance Doors (the Main WRC Entrance near the circle drive) and then a SURGE team member should walk that parent to the medic station. When the parent is ready to leave, a SURGE team member should escort them out of the building. If the same happens at EPMS, the parent should report directly to the medic tent and remain there until finished.*

## Rain & Inclement Weather Plans

### Small Group Time

If it rains or if there is inclement weather during small group time, small group leaders should immediately gather their groups and head inside. If you are a 1<sup>st</sup>-3<sup>rd</sup> grade group meeting outside, you will go into the Worship Center. If you are a 4<sup>th</sup>-6<sup>th</sup> grade outdoor track group, you will head to your inclement weather locations listed on the next page. ***(If you are a 4<sup>th</sup>-6<sup>th</sup> Beautiful Bakery small group leader, you will take your group to the WR Kids Hall upstairs).***

### Track Time

Weather notifications that would cause changes at drop-off or pick-up will be sent out through email to parents and volunteers. **Please note that track time WILL continue outside in the rain**, but if there is actual inclement weather, David Cole, our Campus Support Lead, will notify Small Group Coaches and Key Leaders to bring all kids participating in their track at that time inside to the Inclement Weather Locations listed below. Small Group Leaders and Key Leaders do not make this call on their own but must wait to hear from David.

**If the Inclement Weather Plan is in place at drop-off, it will ONLY impact 1<sup>st</sup>-3<sup>rd</sup> graders participating in an outdoor track.** They will need to be dropped off in the Inclement Weather Locations listed below. Everyone else will still be dropped off and picked up in their regular locations.

**If the Inclement Weather Plan is in place at pick-up, it will ONLY impact 4<sup>th</sup>-6<sup>th</sup> graders participating in an outdoor track.** They will need to be picked up in the Inclement Weather Locations listed on the next page. Everyone else will still be picked up in their regular locations.

### WRC Outdoor Tracks

Backyard Games – Special Needs Lobby

BMX - Upstairs near WR Kids Desk

Dodgeball – WR Kids Hall

Grill Masters –Atrium to right of stairs

Kid vs. Wild – Upstairs Near Men’s Restroom

Ninja Warrior – Hall between the Special Needs Building and the WR Kids Area

RC Cars – Upstairs Near Women’s Restroom

Skateboarding – Upstairs in Gallery Past the Elevator

### EPMS Outdoor Tracks

Baseball – 700 Hall

Field Day Fun – 600 Hall

Football – 500 Hall

Pickleball – 400 Hall

Rocket Blast – Room 804a

Soccer – Main Hall

Volleyball – Gym Lobby

## Emergency Procedures

### FIRE

#### **Upon discovering smoke, fire, or the sound of the fire alarm:**

- Sound the building's fire alarm by pulling the red fire alarm levers. They are located throughout the building. Familiarize yourself with their location in your area.
- Have children line up at the door.
- Leaders should check their area to make sure that all children are accounted for.
- Ensure that you have your group's roster and count the kids to be sure you have everyone on your roster. If not, find them quickly or radio security who will be making a final sweep through hallways and bathrooms.
- Exit the building using the primary or secondary emergency route that is posted in your area.
- Close doors behind you as you exit.
- Have one leader at the front of the line and at least one leader at the back of the line.
- Report to your designated emergency assembly area (see next page for details).
- When arriving at the assembly area: children should sit in circles with a leader on the outside of the group for security.
- Take attendance of children, and report on radio immediately if any children are missing.
- Do not release any children to parents unless specifically instructed by West Ridge staff.
- Do not reenter the building until instructed by West Ridge staff.

#### **Assembly Area** for the following tracks is the Team Member Parking Lot

- Anyone in the Worship Center
- Backyard Games
- Beautiful Bakery
- Cheerleading
- Dodgeball
- E-Sports
- Jiu Jitsu
- Nerf Battle
- Ninja Warrior
- Surge JR
- Table Sports
- Tumbling & Gymnastics
- Woodworking

#### **Assembly Area** for the following tracks is the South Parking Lot (paved parking lot near the modular buildings):

- Art
- BMX
- Creative Crafting
- Crochet Creations
- Grill Masters
- Kid Vs. Wild
- Kitchen Chaos
- Lego Masters
- Mad Science
- Photography Fun
- RC Cars
- Skateboarding
- Snack Attack

***\*\*If a fire occurs in the gym at EPMS, all basketball participants should exit through the side door that is labeled "Fire Exit" on the SURGE map and gather near the baseball field.\*\****

### SEVERE INCLEMENT WEATHER

- Campus Support Lead, David Cole, will monitor weather updates.
- Weather notifications that would cause the need to find cover in your assigned emergency assembly area will be communicated on the radio, through POCs, security, and texts where possible.

- Leaders will help children line up in their small groups with their SGLs. Leaders should check their area to make sure that all children are accounted for.
- Ensure that SGLs have their group's roster and count the kids to be certain that we have everyone on each roster. If anyone is missing, radio security to find them as they make a final sweep through hallways and bathrooms, etc.
- Lead children to designated shelter-in-place locations.
- Stay away from windows / any glass or areas open to the outdoors.
- Once in the place everyone should line up sitting as close as possible to the walls that touch indoor church walls. (Do NOT put anyone on a wall that touches the great outdoors nor up against a stage.)
- Children should crouch low with their head down, hands over head.
- Take attendance again, and report on radio immediately if any children are missing.
- Do not release any children to parents unless specifically instructed by West Ridge staff.
- Do not return to your normally scheduled location until instructed by West Ridge staff.

### Shelter in Place Areas for Each Track:

- |                    |                     |                     |                     |
|--------------------|---------------------|---------------------|---------------------|
| • Art              | Discovery Room A    | • Creative Crafting | Discovery Room A    |
| • Backyard Games   | WRK Student Theater | • Crochet Creations | Discover Room B     |
| • Baseball         | EPMS 700 Hall       | • Dodgeball         | WRK Student Theater |
| • Basketball       | EPMS Gym            | • E-Sports          | Breakout Room 2     |
| • Beautiful Bakery | WRK Student Theater | • Field Day Fun     | EPMS 600 Hall       |
| • BMX              | Breakout Room 1     | • Football          | EPMS 500 Hall       |
| • Cheerleading     | WR Kids Theater     |                     |                     |

### Shelter in Place Areas for Each Track (Continued):

- |                   |                       |                  |                       |
|-------------------|-----------------------|------------------|-----------------------|
| • Grill Masters   | Discovery Room A      | • Pickleball     | EPMS 400 Hall         |
| • Jiu Jitsu       | Special Needs Theater | • RC Cars        | Discovery Room B      |
| • Kid vs. Wild    | Breakout Room 1       | • Rocket Blast   | EPMS Gym              |
| • Kitchen Chaos   | Discovery Room B      | • Skateboarding  | Discovery Room B      |
| • Lego Masters    | Discovery Room B      | • Snack Attack!  | Discovery Room B      |
| • Mad Science     | Discovery Room B      | • Soccer         | EPMS Main Hall        |
| • Martial Arts    | EPMS Gym              | • Table Sports   | Special Needs Theater |
| • Nerf Battle     | Special Needs Theater | • Tumbling & Gym | Breakout Room 1       |
| • Ninja Warrior   | WRK Student Theater   | • Woodworking    | Breakout Room 2       |
| • Photography Fun | Discovery Room B      |                  |                       |
| • Volleyball      | EPMS Gym              |                  |                       |

### CODE RED (Intruder)

#### **If you are inside:**

- Stay in or get to the closest secured room/ area and lock the doors (classroom, modular, gym, etc.).
- Security, Coaches, and Leads should secure ministry area doors (WR Kids Elementary, Worship Center, Discovery Rooms, etc.)

*\* Do not wait for kids or team members that are outside your area to return, secure your doors immediately. (Security and law enforcement will be responsible for sweeping the area and helping get any unsecured persons to safety)\**

- If communication is available call (9-1-1) and then turn the phone on silent or off.
- Have children gather behind solid objects away from the door.
- Count kids and take attendance.
- Do not remain in open areas, seek shelter.
- Do not use the fire alarm as that directs people into the open.
- Stay away from windows and help keep children calm and quiet.
- Do not unsecure your area until law enforcement lets you know they have secured the campus.

#### **If you are outside:**

- Small Group Leaders: Gather your group, know who is with you, and FLEE – get as far away from the intruder/ danger as possible!
  - If you can quickly get with your coach or another leader, please do so, but do not delay in order to do that.
  - Also, do not wait for any kids that are currently away from your group to return (in the bathroom or with the medic, etc.). Get moving with the kids that are with you.
- All other team members: Help move everyone as far away from the intruder/ danger as possible.
- Once you are away from the danger, assess who is with you again, and keep everyone calm until law enforcement lets you know that you can return to the SURGE campuses.
- Be prepared to move your group again if the intruder/ danger comes your way.

***\*Please note that if we have a Code Red at EPMS, we will lock down all our WRC indoor areas and bring everyone outdoors into the Worship Center. If we have a Code Red at WRC, we will bring everyone outdoors into the EPMS gym and lock it down.\****

## **#7 SPECIFIC TEAM MEMBER ROLES**

**Find yours...and READ IT! 😊 (They are in alphabetical order)**

***\*\*If you have a Lead (Key Leader) position, your role is not listed because you should be receiving direct instructions from a WRC staff member. Let that staff member know if you have any questions.\*\****

### **CAMPUS SUPPORT TEAM**

You will meet with your Lead upstairs on the sofas near the women's restroom at WRC on Monday at 5 pm to get your radio and to prepare for the night. This team assists in getting campus grounds ready each day, keeping both campuses clean during and after SURGE, delivering water, trashcans, etc. as needed. You need to bring an ATV or golf cart to use for the week.

### **COACHING TEAM (formally known as Point of Contacts or POCs):**

#### **Small Group Coaches -**

Before camp each day - Check in with your Small Group Leaders (SGLs) through text or Konverse or even a phone call. Let the Substitute Lead know if you will need any substitutes for a given day.

Arrival - Meet your Lead Coach and team in the Pastoral Care Room at WRC that is in the Worship Center lobby behind the waterfall by 5 pm on Monday and then by 5:15 the rest of the week.

There you will pick up your supplies (backpack, radio, headset, etc.), pray together and go over nightly instructions.

After that, please go directly to your assigned Connection Spot (for 1<sup>st</sup>-3<sup>rd</sup> grade coaches – see maps at the end of this handbook) or to your Large Group area (for 4<sup>th</sup>-6<sup>th</sup> grade coaches - see maps at the end of this handbook and there will be signs in the Worship Center) to meet your SGL team. Pray with your SGLs and help them be ready for kids to arrive at 5:45 p.m. You will not be responsible for passing out any nametags, but please be sure that your SGLs and their small group kids have tags. *(The tags should be in each SGL bag)*. If any of them are missing a nametag or if you need a substitute, report that via radio to Team Member Central as soon as possible.

During Camp –You will have 5 -10 SGLs on your team that you will support throughout camp. You will travel with your SGLs and their groups to all camp locations and activities guiding and helping them with any and everything as needed. Be attentive and engaged with your SGLs and their groups as you work to keep them encouraged, organized, accounted for, informed, and on schedule. Be sure to collect all your SGLs’ rosters and get them turned in to Team Member Central at WRC or Camp Central at EPMS by 7:30 each night. Also, please wear your radio and headset at all times.

Dismissal - Keep parents away from outdoor tracks and out of the building until 9 p.m. each night. Then you should help your SGLs with dismissal, however needed.

### **Large Group Coaches -**

Arrival – Meet your Lead Coaches and your team in the Pastoral Care Room at WRC that is in the Worship Center lobby behind the waterfall at 5 pm on Monday and then 5:15 the rest of the week. There you will pick up your supplies (backpack, radio, headset, etc.), pray together and go over nightly instructions. Then you will head to the Worship Center to support the small group coaches however needed. As kids begin to arrive, you will help them find their track seating area and their small group leader.

During Camp - You will roam around the Worship Center looking for ways to be helpful to small group coaches and their SGLs (taking kids to the bathroom, answering questions, getting involved in discipline, etc.). After the second large group, 1<sup>st</sup>-3<sup>rd</sup> grade small groups will meet in the Worship Center and outside the Worship Center in the South Parking Lot (the one near the modulars). At that time, we will need some of the large group coaches to head to the parking lot to help small group coaches and their SGLs outside.

Dismissal – All 1<sup>st</sup> -3<sup>rd</sup> graders will be picked up in the Worship Center. Please help the small group coaches get their SGLs and their groups back to their track signs and seated in the Worship Center by 9 p.m. each night. Then be available to assist parents in finding their kids.

### **EARLY DROP-OFF TEAM**

This team will meet your Lead in the Kids Theater at West Ridge Church at 4:30 on Monday afternoon and at 4:45 the rest of the week. Early Drop-off team members hang out and enjoy time with SURGE team member kids in the Kids Theater from 5 until about 5:45 p.m. so that team members can get to their designated locations before camp drop-off begins. This team also works together to deliver all the kids in Early Drop-off to their track locations or to the large group area when camp drop-off opens each evening at 5:45.

## **FRIDAY NIGHT FINALE GUEST SERVICES TEAM**

This team only serves on Friday night. You will greet, assist, and serve our Friday Night Family Finale guests. You will meet your Lead at WRC Camp Central at 5:15 p.m. on Friday evening to get instructions and be assigned to a specific area and job.

## **GUEST SERVICES TEAM**

Arrival – This team will meet to the left of the World Café when facing the café at 5:00 p.m. on Monday. Your Lead will give you instructions and assign you to a specific area and job.

During Camp – You are the “customer service” side of SURGE. This team is located all over the WRC and EPMS campuses (**including the parking lot to help supplement the parking team when needed**) greeting families and kids and helping them find their way during drop-off and pick-up times. (All 4<sup>th</sup>-6<sup>th</sup> graders get dropped off in the WR Worship Center and all 1<sup>st</sup>-3<sup>rd</sup> graders get dropped off in their track locations). **This team will also help monitor bathrooms during camp hours.** You will answer questions about the camp schedules, locations, and other important SURGE information (a “cheat sheet” will be provided 😊). If at any time you do not know an answer, please find a SURGE team member with a radio and a headset that give them direct access to Camp Central or escort the family that needs help to Camp Central at WRC or the Camp Central tent at EPMS. Remember: You leave a lasting impression on a family’s evening. Please do your best to be welcoming, helpful and live out a Christ-like attitude all camp long.

Dismissal – As parents return to get their kids, please be ready to assist them. (4<sup>th</sup>-6<sup>th</sup> graders started off in the Worship Center, but they get picked up in their track locations so the parents might need some help finding their track. All the 1<sup>st</sup>-3<sup>rd</sup> graders started the night in their track, but they will get picked up in the WRC Worship Center). If a parent does not have their pick-up tag, escort them to WRC or EPMS Camp Central immediately to get a temporary tag. They cannot pick up their kid without one! Photos of the pick-up tag are accepted.

## **GOLF CART TEAM**

This team will drive golf carts to and from WRC and the WRC parking lots chauffeuring team members and families with a smile. You will meet your Lead in the Team Member Parking Lot at WRC at 4:15 p.m. each night of camp and work from about 4:30 to 6:15 and then again from about 8:30 to 9:45 p.m.

## **LARGE GROUP TEAM– BAND, AVL, DANCERS, CHARACTERS & STAGE ASSISTANTS**

This team is specially selected by the Lead to help with large group. All these positions will receive their call times from their Lead as camp week gets closer, except for Stage Assistants.

Stage Assistants don’t need to be specially selected, and they should arrive at the WRC Worship Center Green Room at 5 p.m. each night to check in and receive instructions from their Lead, and then stay throughout both large groups to help set up, clean up, move mic stands, tables, props, etc.

## MEDIC TEAM

The Medic Team should have experience in the medical field and be prepared to assess and help with any injuries or medical issues or questions throughout camp.

Though you will make decisions on how to care for the kids, you will not administer any medicine unless there is a life-threatening situation that cannot wait for a parent or emergency worker to arrive. You should meet your Lead at the WRC Medic area in the atrium (to the left when facing the stairs) at 5:15 on Monday night (and then 5:30 the rest of the week) for any specific instructions and to pick up a radio and any supplies you might need. Then you will remain on campus (either at WRC or EPMS) on call until the end of camp each night.

## MIDDLE SCHOOL HELPERS

You know who you are 😊... all upcoming 7<sup>th</sup>-9<sup>th</sup> graders serving at camp. On Monday between 5:15 and 5:30, please report to Middle School Helper Check-In in front of the World Cafe in the WRC atrium to check in, get your nametag, and any extra instructions from the Middle School Helper Lead.

After that, **if you are signed up to help your own parent in a certain role**, go with them to your assigned position. **If you are signed up as a Track (sport or art) Helper**, you should report to your track location and then help with any and all tasks that your Track Lead assigns you throughout the evening. **If you are a 4<sup>th</sup>-6<sup>th</sup> grade Small Group Helper**, you should meet the Small Group Leader (SGL) that you are assigned to assist in the Worship Center. **If you are a 1<sup>st</sup>-3<sup>rd</sup> grade Small Group Helper**, you should meet the SGL that you are assigned to assist in your track area. All Small Group Helpers will assist the SGL however he/ she needs throughout the night. If you are a SURGE Jr. helper, report to Pre-K Resource Room in the SURGE Jr. area to find your Lead and get instructions.

On Tuesday – Thursday, you do not have to check in near the World Café. Instead, go directly to your assigned position by 5:40 p.m.

## PARKING TEAM

Arrival - Please meet your team in the Team Member Parking Lot at WRC at 4:15 each afternoon. Your Lead will give you any needed instructions and help everyone get to their assigned positions.

During Camp -You will be busy directing traffic and helping people to park from about 5 until around 6:30 p.m. Then you will have time to hang out with team members, relax and tailgate, walk around camp, check out Large Group, etc.

Dismissal - At 8:15, you will need to head back to the Team Member Parking Lot to regroup and to be ready to direct traffic for camp dismissal from about 8:30 to 9:30 p.m.

## REGISTRATION TEAM

Members of this team play an administrative role, which may include registering kids, t-shirt distribution, camp participant check-in, etc. This role is primarily for Sunday, May 31st (3 - 6pm), Saturday, June 6th (9am - 12pm), Sunday, June 7th (9:30am - 2pm), and Monday, June 9th (3pm-5pm). We would love you to also sign up as a Small Group Leader or a Substitute for the rest of camp! Your Lead will be in touch with you with any further details.

## **RESOURCE TEAM 1 (PRE-CAMP)**

This team will meet at West Ridge Church during office hours (9-5) on certain days in the two weeks leading to camp to prepare small group supplies. Your Lead will be in touch with you to give you specific meeting times and further instructions.

## **RESOURCE TEAM 2 (DURING CAMP)**

This team will meet downstairs at around 4 p.m. at WRC in the glass staircase room (see map) labeled “SGL Check-In” each day of camp to prepare backpacks and supplies. Then throughout the evening, you will complete other administrative and organizational tasks. Finally, at the end of the night you will help collect and re-organize backpacks. Your Lead will be in touch to give you specific meeting times and further instructions.

## **SECURITY TEAM**

This team will be spread out all over the two SURGE campuses working to keep all participants and team members safe throughout camp. You will meet your Lead upstairs at the WR Kids desk near at WRC on Monday at 5 p.m. for specific assignments and to pick up a radio.

## **SET UP TEAM**

This team will meet their Lead at West Ridge Church Camp Central (The Help Center in the Atrium) for job assignments and then work throughout both campuses (WRC & EPMS) on Sunday, June 7<sup>th</sup> (the day before SURGE) from 3 p.m. to around 8 p.m. You will help unload and set up supplies and equipment as well as help with other duties like moving furniture, hanging signs, stacking chairs, and getting areas ready for camp.

## **SMALL GROUP LEADERS (SGLS):**

Before Camp – Please be sure to read over the small group written lesson plans and watch the small group video lesson plans. Be prepared for your small group time by planning how you will implement each night’s lesson. Contact your assigned small group coach with any questions.

Arrival -You should pick up your SGL bag in SGL check-in and then report to your Small Group Coach + SGL Connection Spot each night by 5:30 to check in with your Small group Coach, get any last-minute instructions, and pray together before kids begin to arrive at 5:45. (4<sup>th</sup>-6<sup>th</sup> = Your Connection Spot is your track sign in the WRC Worship Center / 1<sup>st</sup>-3<sup>rd</sup> = see map for your designated location in or near your track area) *In addition to your small group lesson supplies, your backpacks will include your small group roster, your name tag, and name tags for all the kids in your group. You need to put the kids name tags on their necks as soon as they arrive each night.*

**If you are missing any nametags or have extra nametags, please report that to your small group coach immediately. Also, as kids arrive, be sure to check them off on your full-page roster, as well as write them on and check them off the mini roster that you will fill-in and keep on your name tag/ lanyard all week.** (Taking a photo of your roster each night is also a good idea!)

During Camp – You are the kids’ shepherds, mentors, and caretakers at camp. You will take the kids where they need to go, participate with them in track time and Large Group, and lead them in a small group time that reiterates the Bible story for each night.

Dismissal - You are responsible for releasing your kids to their parents, BUT parents must have a parent pick-up tag that matches the number on their kid’s nametag to pick him/her up. **You must check each kid’s nametag against the parent pick-up tag to ensure that the numbers match.** (A photo of the parent tag is acceptable). If they match, you should collect the kid’s lanyard with his nametag and put it in your backpack. Then you can release that kid to his parent or guardian.

*(EXCEPTION: On Thursday night, the kids can take their nametags and lanyards home, but only after you have matched their tags with their parents’. Still take the tag off the kid’s neck as you have done all week long, but this time, put it on their parent’s neck. That way we know which kids have been checked out and which kids haven’t).* If a parent does not have a pick-up tag or the numbers do not match, send the parent to Camp Central on their campus (WRC or EPMS) to get a new pick-up tag before you release their kid to them. Parents are told this in the SURGE Parent Handbook...NO EXCEPTIONS! If you need help, get your small group coach or West Ridge staff involved.

At 9:15, take any kids that have not yet been picked up to the WRC Worship Center, and hang out with them until they are picked up. (There will be shuttle buses at EPMS to take you and your kids to WRC). **Once in the Worship Center, sit with your group of kids by the sign with your track’s name on it like you did during large group. When parents arrive, you still have to check their pick-up tags to release kids.**

**\*\*Last but not least, BE SURE TO TAKE YOUR SGL BACKPACK TO SGL CHECK-IN (WHERE YOU PICKED IT UP) BEFORE LEAVING CAMP EACH NIGHT!!!!\*\***

### **SPECIAL NEEDS ONE-ON-ONE TEAM**

This team offers one-on-one care for SURGE kids that need a “buddy” with them at all times. As a one-on-one team member, you need to check in by 5:15 p.m. each night at the Special Needs desk upstairs. Then you go to where your assigned kid will be dropped off for camp (1<sup>st</sup>-3<sup>rd</sup> graders = in their track and 4<sup>th</sup>-6<sup>th</sup> graders = by their track sign in the Worship Center). You will stay with your assigned kid throughout the evening and help them participate in all aspects of camp to the best of their ability.

### **TRACK (SPORTS & ARTS & STEM) ASSISTANTS:**

Arrival - You should meet your Lead in your track area by 5:30 each evening of camp. Your Lead will pick up your nametag and have it for you in your track location on Monday, and then you keep it after that. Your team should gather for prayer and to take care of any last-minute details before the kids begin to arrive at 5:45.

During Camp – You are our sports, arts, and STEM experts alongside your Lead! Be ready to coach, explain, and work with kids in your area however your Lead asks you to.

Dismissal - Help SGLs and Small Group Coaches keep the kids in their groups and organized as parents pick them up.

## **SUBSTITUTES**

You should report to Team Member Central downstairs at WRC each night that you have signed up to serve. If you can be there by 5:30, that's ideal, but if not, come as soon as you can. You will check in with our Substitute Lead to be assigned wherever you are needed. You may stay in that role all night, or you may only be needed for a little while until another leader arrives. In that case, report back to the Substitute Lead at WRC Camp Central or by having someone radio/ call her from the EPMS Camp Central tent to get your next assignment.

Also, please read over the description for each team member role (p.12-17) so that you will be prepared for any position, **BUT be aware that substitutes are most often used to fill in for small group leaders.**

## **SURGE JR. TEAM**

This team provides a camp-like experience for SURGE team members' kids ages birth to Pre-K (any kid who has not yet entered kindergarten) at West Ridge Church in the Pre-K area. Please meet your team in the Pre-K Resource Room by 4:45 pm on Monday and by 5 pm the rest of the week, and plan to serve until 9:30 p.m. nightly. Your Lead will give you further instructions.

## **TEAR DOWN TEAM**

This team will meet their Lead at West Ridge Church Camp Central at 8 p.m. on Thursday night for job assignments. They will work throughout both campuses for the next two to three hours taking down SURGE and getting the church back to "normal."

## **VIDEO, PHOTO & MEDIA TEAM**

This team is made up of specialists in these fields, and they record SURGE through great pictures, videos and social media. Your Lead will contact you with specific instructions.

## **#8 SURGE Schedules** *(See next page)*

## 1st - 3rd Grade Schedule Monday - Thursday

### West Ridge Church Tracks

5:45 - Drop-off Begins in Track Location  
6:00 - Track Begins  
7:10 - Track Ends & Head to Worship Center  
7:20 - Large Group Begins  
8:10 - Large Group Ends  
8:15 - Small Group Begins  
(Have Snack During Small Group)  
9:00 - Small Group Ends & Parent Pickup Begins  
In the Worship Center  
9:15 - SGLs & Remaining Kids Stay in the  
Worship Center for Late Pickup

### East Paulding Middle School Tracks

5:45 - Drop-off Begins in Track Location  
6:00 - Track Begins  
7:00 - Track Ends, Bathroom, & Bus to WRC  
7:20 - Large Group Begins  
8:10 - Large Group Ends  
8:15 - Small Group Begins  
(Have Snack During Small Group)  
9:00 - Small Group Ends & Parent Pickup Begins  
in the Worship Center  
9:15 - SGLs & Remaining Kids Stay in the  
Worship Center for Late Pickup

## 4<sup>th</sup> - 6<sup>th</sup> Grade Schedules Monday - Thursday

### West Ridge Church Tracks

5:45 - Drop-off Begins in Worship Center  
6:00 - Large Group Begins  
6:50 - Large Group Ends & Head to Track Location  
7:00 - Small Group Begins  
(Have Snack During Small Group)  
7:50 - Small Group Ends & Track Begins  
9:00 - Track Ends & Parent Pickup Begins  
9:15 - SGLs Take Remaining Kids to the  
Worship Center for Late Pickup

### East Paulding Middle School Tracks

5:45 - Drop-off Begins in Worship Center  
6:00 - Large Group Begins  
6:50 - Large Group Ends, Bus to EPMS, Bathroom  
7:10 - Small Group Begins  
(Have Snack During Small Group)  
8:00 - Small Group Ends & Track Begins  
9:00 - Track Ends & Parent Pickup Begins at EPMS  
9:15 - SGLs & Remaining Kids Ride a Bus to the  
Worship Center for Late Pickup

## Friday Night Family Finale for ALL Ages

- *Parents and siblings will stay and participate with their kids at this event!*
- *Friends and family that didn't attend SURGE are also welcome to come!*
- *Team members are encouraged to attend, but you do not have responsibilities.*

**6:00-7:15 p.m.**

**SURGE Recap Video and Last SURGE Large Group in the WRC Worship Center**

**7:15-9:00 p.m.**

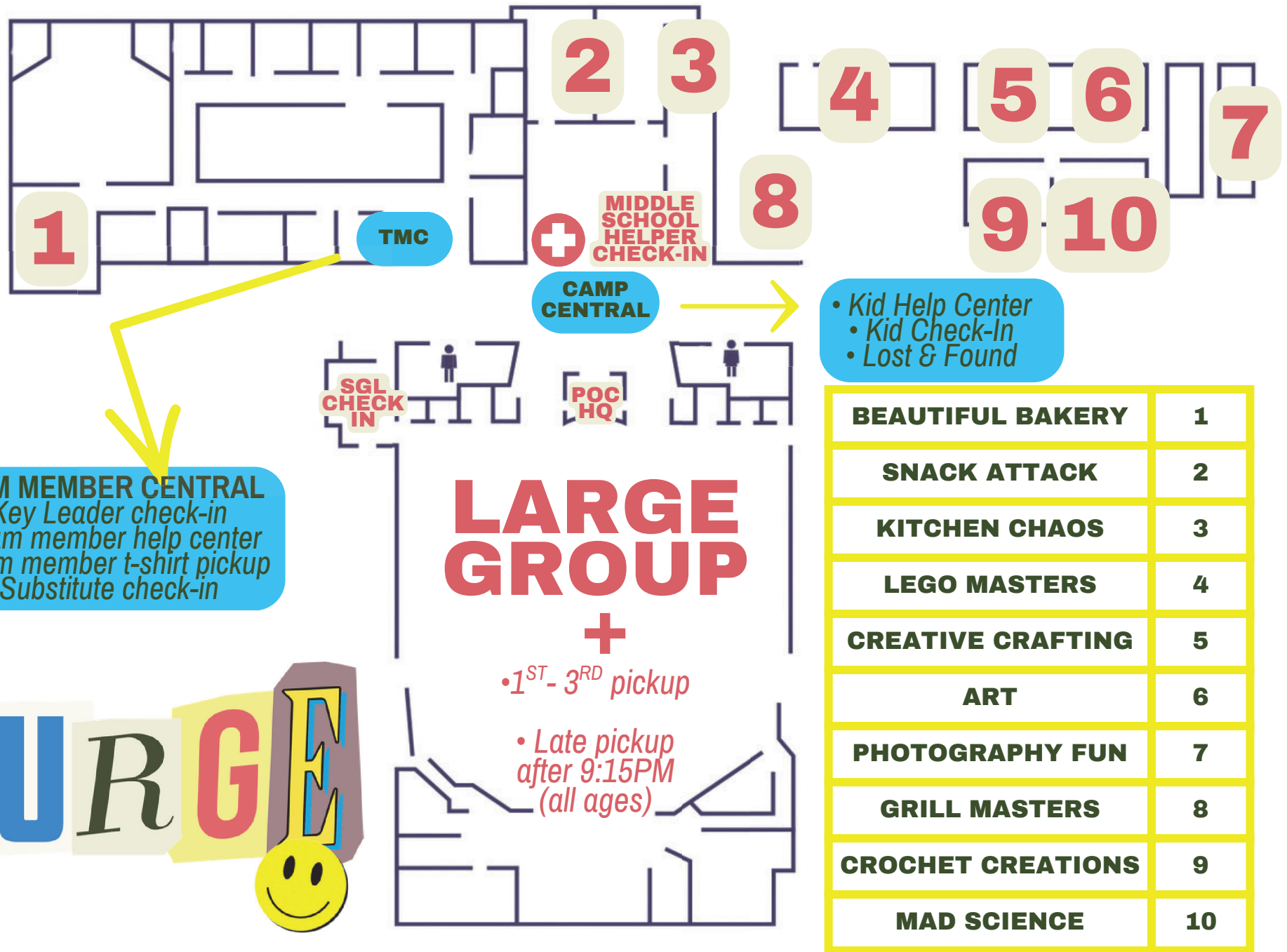
**Families go off campus for an adventure together!**

**#9 SURGE CAMP MAPS** (See next several pages)

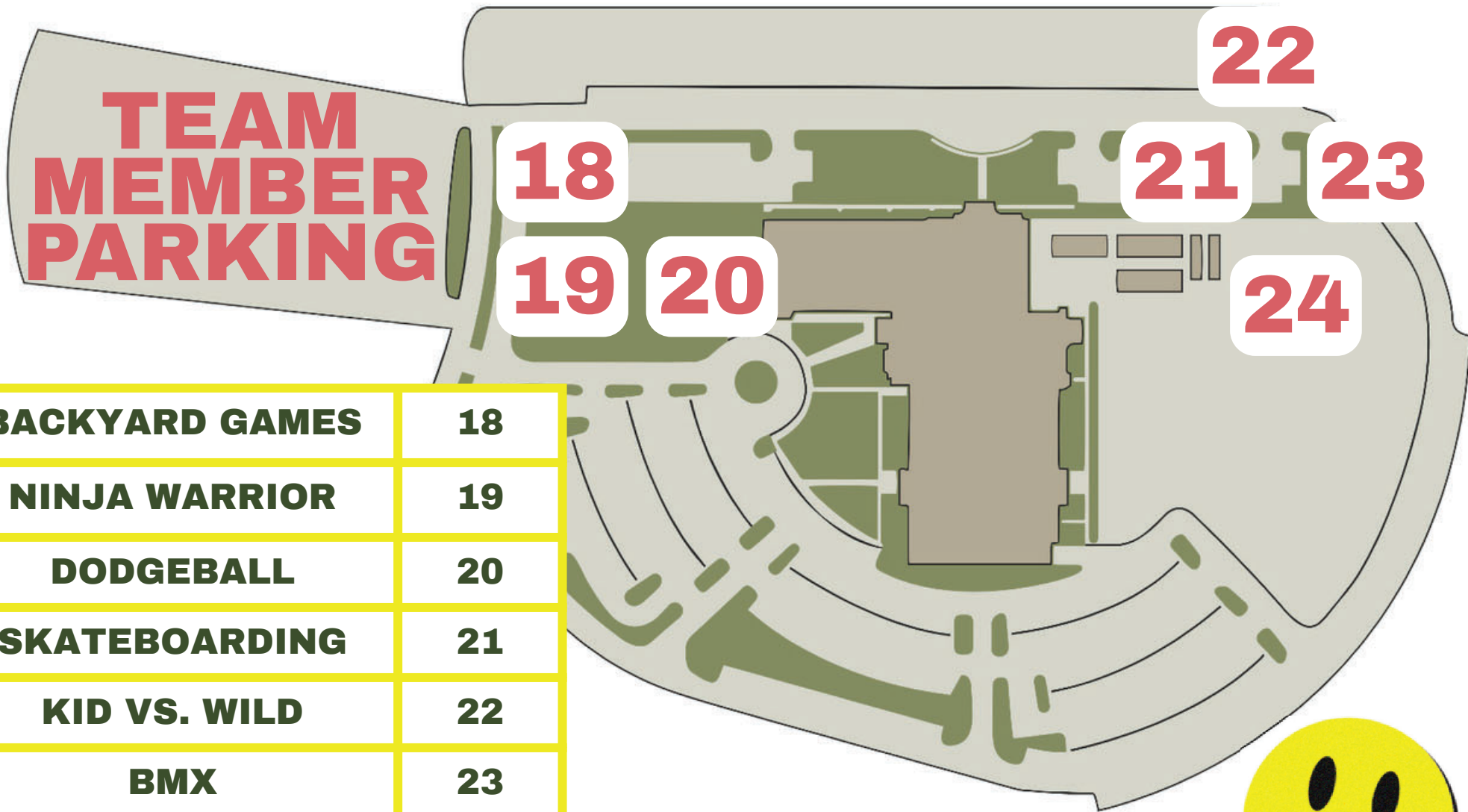
**SURGE 2026  
TRACK MAPS**



# WEST RIDGE | DOWNSTAIRS MAP



# WEST RIDGE | OUTDOOR MAP



|                       |           |
|-----------------------|-----------|
| <b>BACKYARD GAMES</b> | <b>18</b> |
| <b>NINJA WARRIOR</b>  | <b>19</b> |
| <b>DODGEBALL</b>      | <b>20</b> |
| <b>SKATEBOARDING</b>  | <b>21</b> |
| <b>KID VS. WILD</b>   | <b>22</b> |
| <b>BMX</b>            | <b>23</b> |
| <b>RC CARS</b>        | <b>24</b> |



# WEST RIDGE | UPSTAIRS MAP

|                                |           |
|--------------------------------|-----------|
| <b>NERF BATTLE</b>             | <b>11</b> |
| <b>E-SPORTS</b>                | <b>12</b> |
| <b>JIU-JITSU</b>               | <b>13</b> |
| <b>TABLE SPORTS</b>            | <b>14</b> |
| <b>CHEERLEADING</b>            | <b>15</b> |
| <b>WOODWORKING</b>             | <b>16</b> |
| <b>TUMBLE &amp; GYMNASTICS</b> | <b>17</b> |



|                      |           |
|----------------------|-----------|
| <b>SOCCER</b>        | <b>25</b> |
| <b>ROCKET BLAST</b>  | <b>26</b> |
| <b>PICKLE BALL</b>   | <b>27</b> |
| <b>BASEBALL</b>      | <b>28</b> |
| <b>FOOTBALL</b>      | <b>29</b> |
| <b>MARTIAL ARTS</b>  | <b>30</b> |
| <b>BASKETBALL</b>    | <b>31</b> |
| <b>FIELD DAY FUN</b> | <b>32</b> |
| <b>VOLLEYBALL</b>    | <b>33</b> |



**SURGE**

The word "SURGE" is written in large, colorful, block letters. The 'S' is red, 'U' is blue, 'R' is grey, 'G' is yellow, and 'E' is purple. A yellow smiley face is positioned below the letter 'E'.

**EAST PAULDING MIDDLE**

# SURGE



## STAGE

**ART**  
**CREATIVE CRAFTING**  
**LEGO MASTERS**  
**MAD SCIENCE**

**BACKYARD GAMES**  
**NINJA WARRIOR**  
**BEAUTIFUL BAKERY**  
**DODGEBALL**

**NERF BATTLE**  
**JIU JITSU**  
**TABLE SPORTS**  
**WOODWORKING**

**FOOTBALL**  
**PICKLE BALL**  
**ROCKET BLAST**  
**SOCCER**  
**MARTIAL ARTS**

**RC CARS**  
**BMX**  
**KID VS WILD**  
**CROCHET CREATION**  
**PHOTOGRAPHY FUN**

**KITCHEN CHAOS**  
**SNACK ATTACK**  
**GRILL MASTERS**  
**SKATEBOARDING**

**TUMBLE + GYMNASTICS**  
**CHEERLEADING**  
**E-SPORTS**

**BASKETBALL**  
**BASEBALL**  
**VOLLEYBALL**  
**FIELD DAY FUN**

## AVL BOOTH

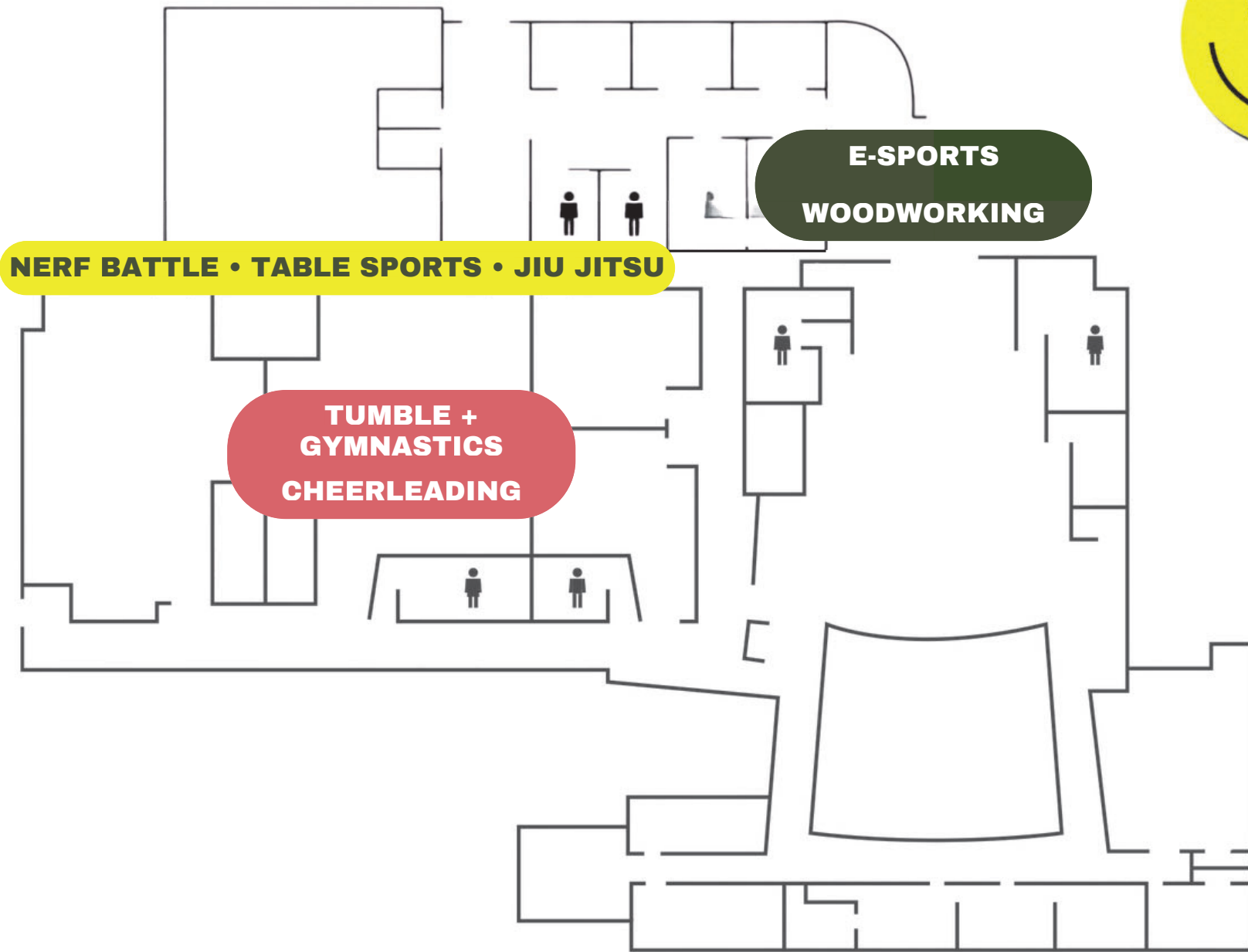


# LARGE GROUP SEATING CHART

**SURGE 2026**  
**SMALL GROUP MAPS**



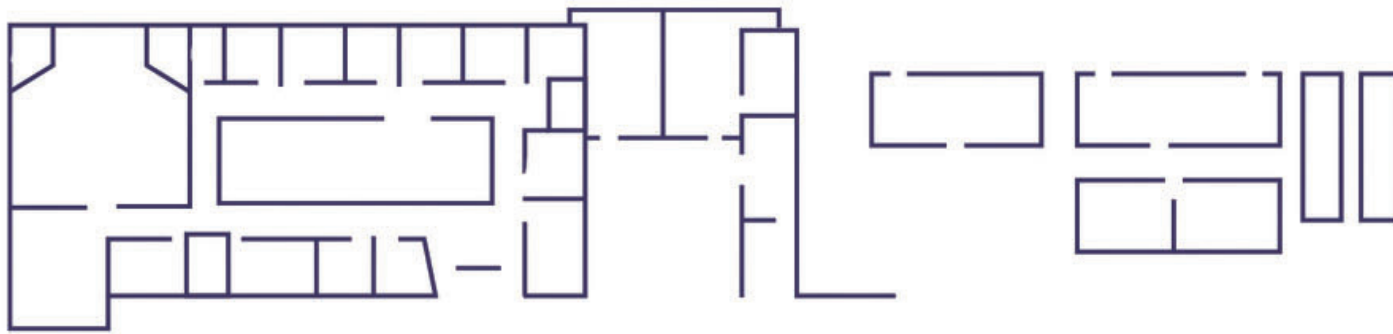
# WEST RIDGE | UPSTAIRS



**4TH-6TH SMALL GROUPS**

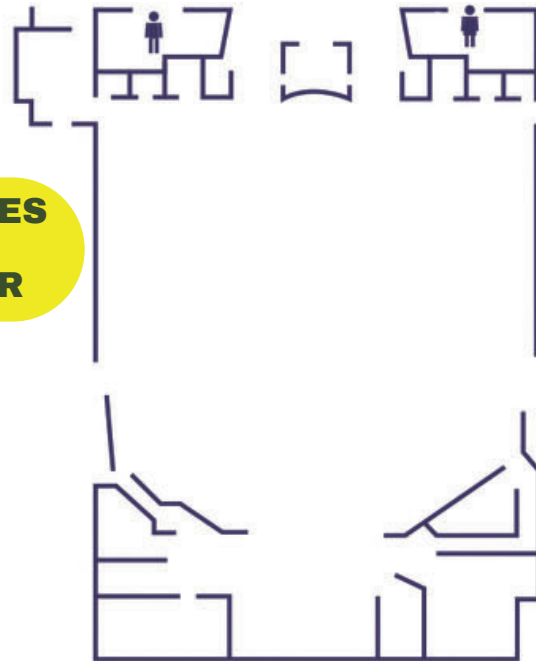
# WEST RIDGE | DOWNSTAIRS

**BEAUTIFUL  
BAKERY**  
**DODGEBALL**



**BMX**  
**KID VS WILD**

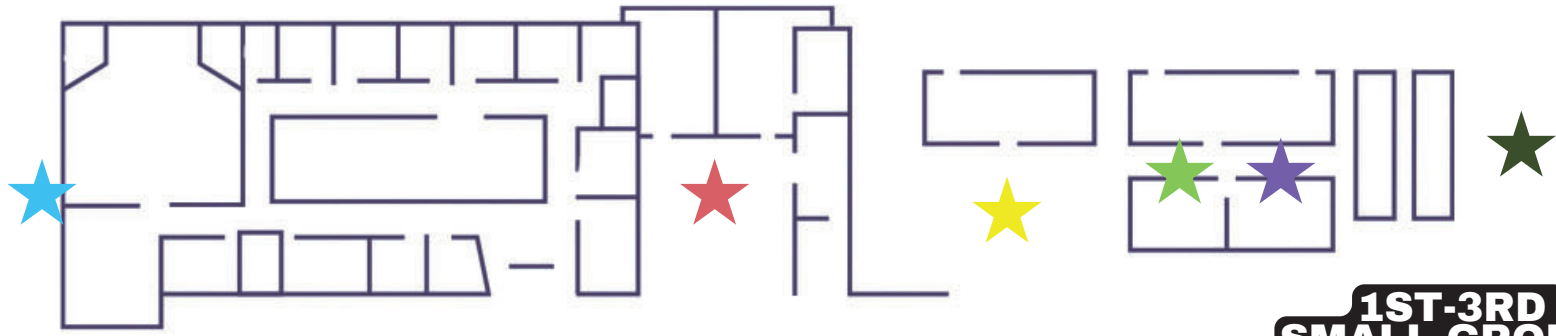
**BACKYARD GAMES**  
**NINJA WARRIOR**



**ART**  
**CREATIVE CRAFTING**  
**CROCHET CREATIONS**  
**GRILL MASTERS**  
**KITCHEN CHAOS**  
**LEGO MASTERS**  
**MAD SCIENCE**  
**PHOTOGRAPHY FUN**  
**RC CARS**  
**SKATEBOARDING**  
**SNACK ATTACK**

## 4TH-6TH SMALL GROUPS UPSTAIRS & INDOOR TRACKS

# 1ST - 3RD COACH CONNECTION DOWNSTAIRS & OUTSIDE



**1ST-3RD  
SMALL GROUPS  
OUTSIDE**

- CHEERLEADING
- ART
- TUMBLE & GYMNASTICS
- CREATIVE CRAFTING
- GRILL MASTERS
- MAD SCIENCE
- CROCHET CREATIONS
- RC CARS
- PHOTOGRAPHY FUN
- SKATEBOARDING
- E-SPORTS
- WOODWORKING
- NERF BATTLE
- JIU JITSU
- TABLE SPORTS

- FIELD DAY FUN
- KITCHEN CHAOS
- VOLLEYBALL
- SOCCER
- BASKETBALL
- FOOTBALL
- BASEBALL
- ROCKET BLAST
- KID VS WILD
- BMX
- DODGEBALL
- NINJA WARRIOR
- BACKYARD GAMES
- BEAUTIFUL
- BAKERY
- SNACK ATTACK
- MARTIAL ARTS
- PICKLEBALL

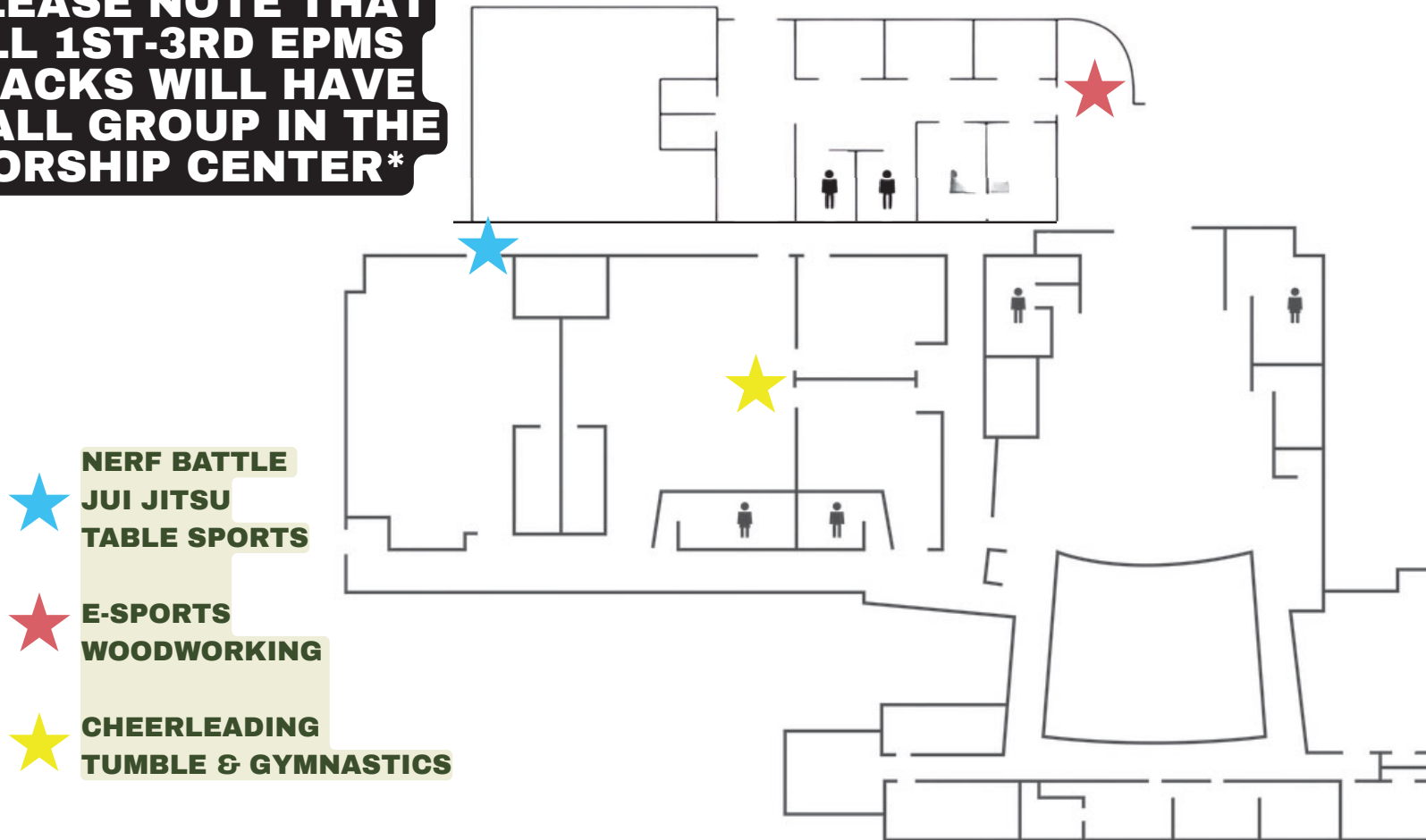
**1ST-3RD  
SMALL GROUPS  
IN WORSHIP CENTER**

-  BACKYARD GAMES & NINJA WARRIOR
-  ART & CREATIVE CRAFTING
-  CROCHET CREATIONS & MAD SCIENCE
-  PHOTOGRAPHY FUN, RC CARS & SKATEBOARDING
-  GRILL MASTERS & LEGO
-  KITCHEN CHAOS & SNACK ATTACK
-  BEAUTIFUL BAKERY & DODGEBALL

**MEET YOUR COACH BY 5:35  
TO START THE NIGHT RIGHT!**

# 1ST - 3RD COACH CONNECTION - UPSTAIRS

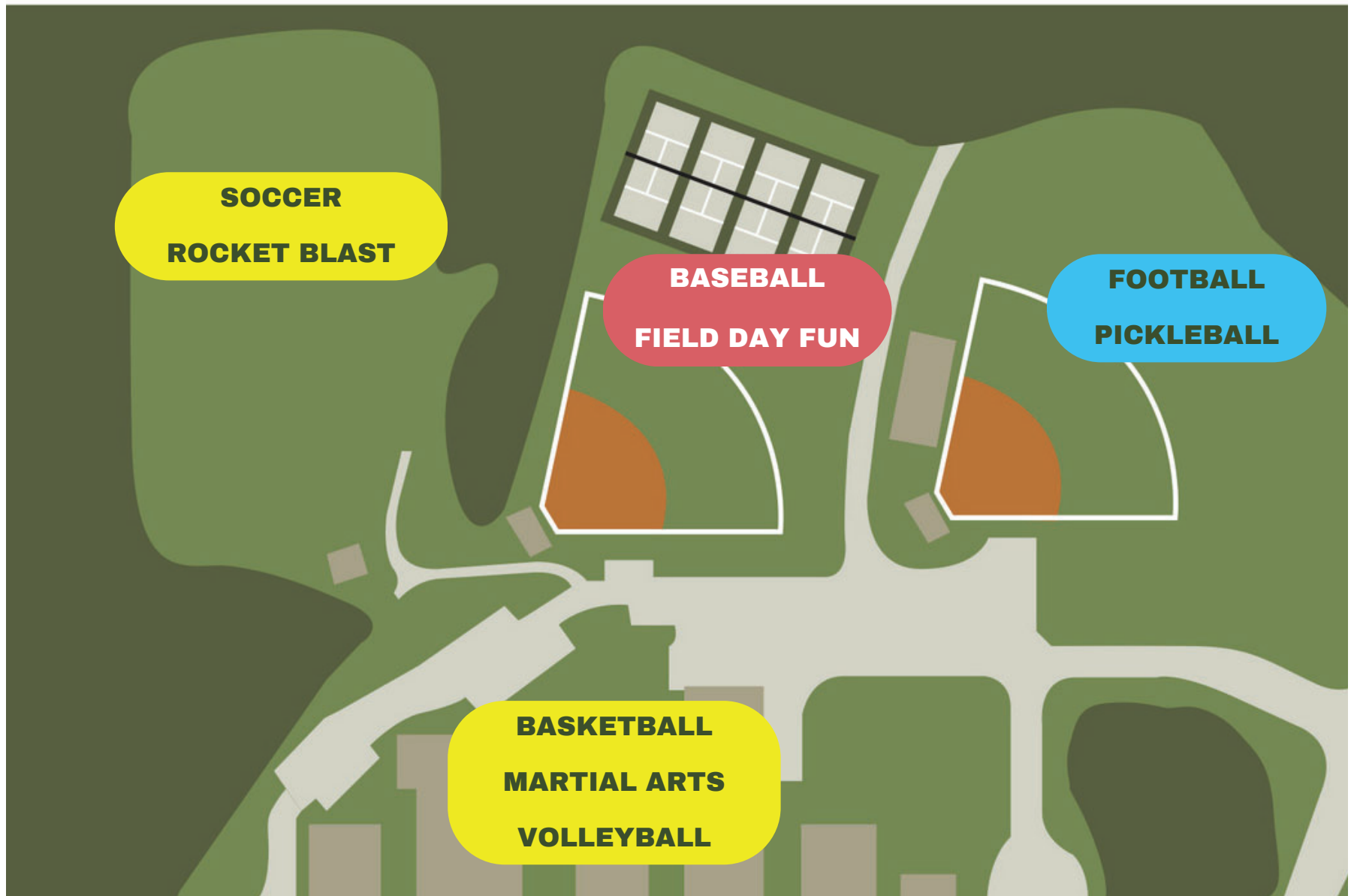
**\*PLEASE NOTE THAT ALL 1ST-3RD EPMS TRACKS WILL HAVE SMALL GROUP IN THE WORSHIP CENTER\***



-  **NERF BATTLE**  
**JUI JITSU**  
**TABLE SPORTS**
-  **E-SPORTS**  
**WOODWORKING**
-  **CHEERLEADING**  
**TUMBLE & GYMNASTICS**

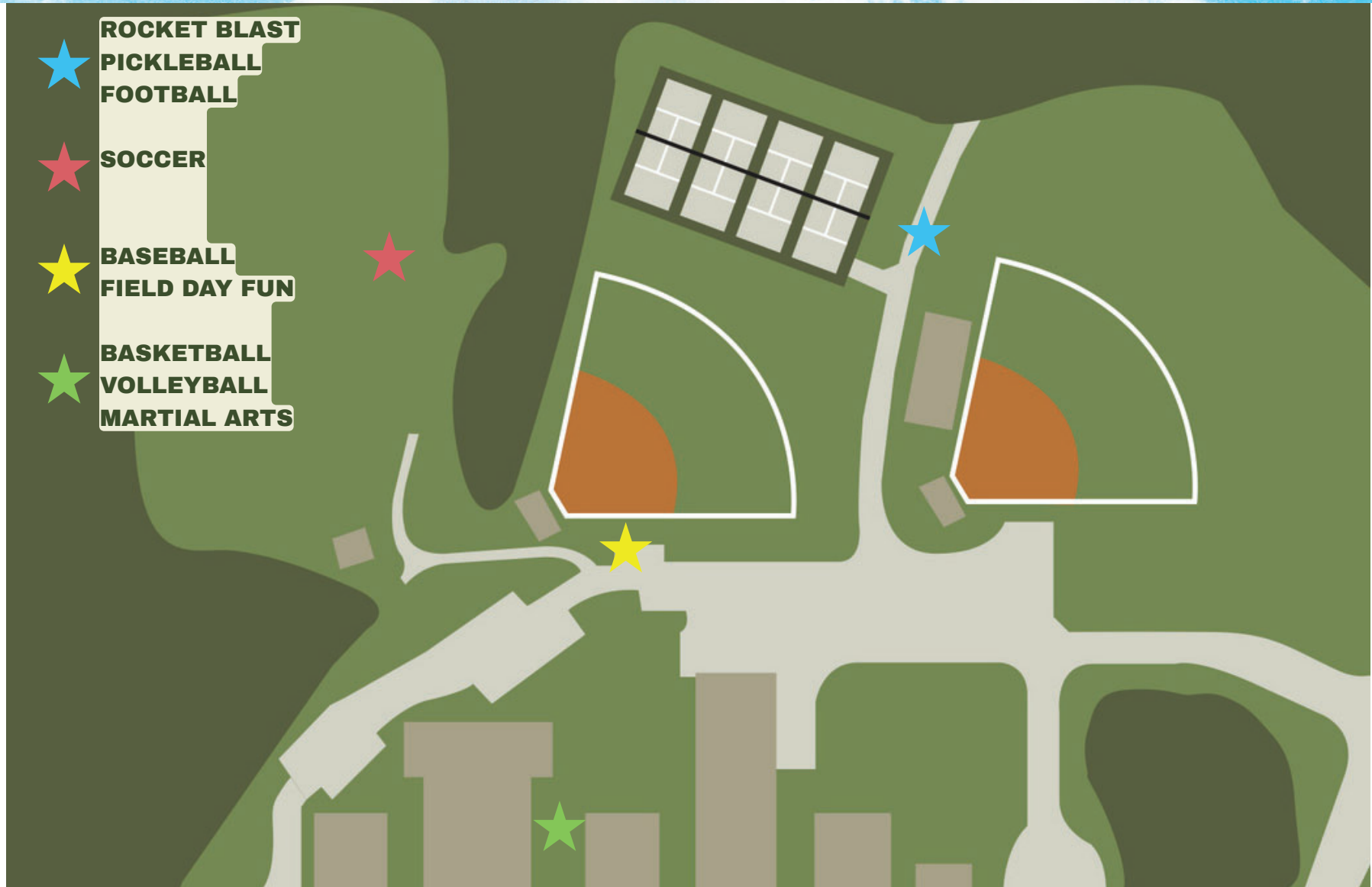
**MEET YOUR COACH BY 5:35 TO START THE NIGHT RIGHT!**

# EAST PAULDING MIDDLE



**4TH-6TH SMALL GROUPS  
FOR EPMS TRACKS**

# 1ST - 3RD COACH CONNECTION - EPMS



**MEET YOUR COACH BY 5:35  
TO START THE NIGHT RIGHT!**